



IMMIGRATION & NATIONAL SECURITY

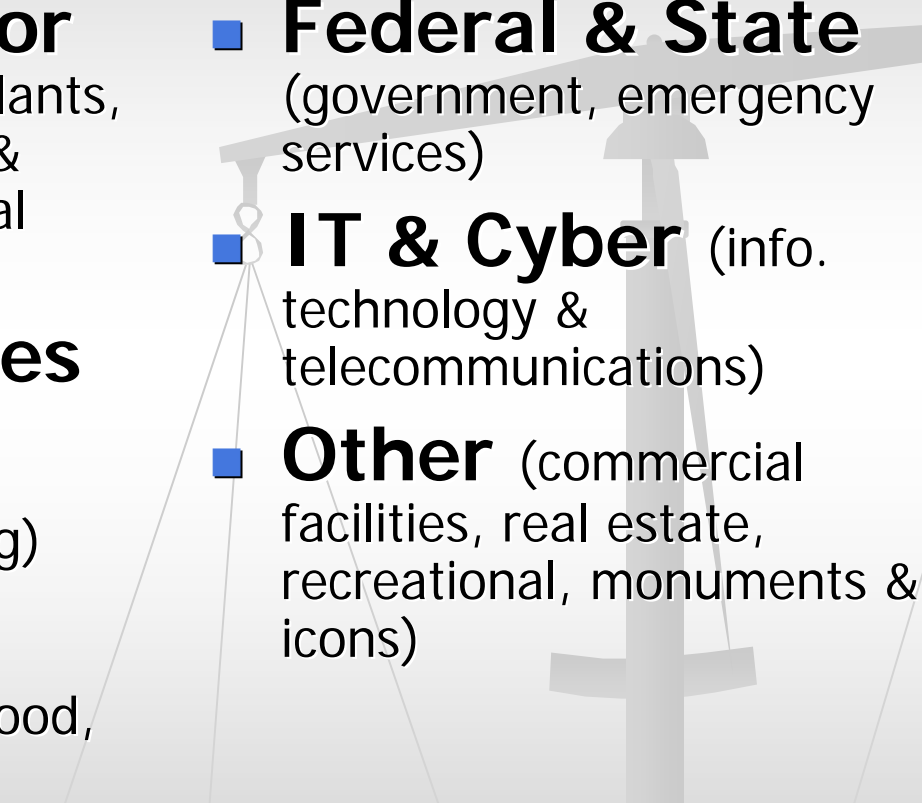
Edward F. Gallagher

Assistant U.S. Attorney

Southern District of Texas

April 5, 2007

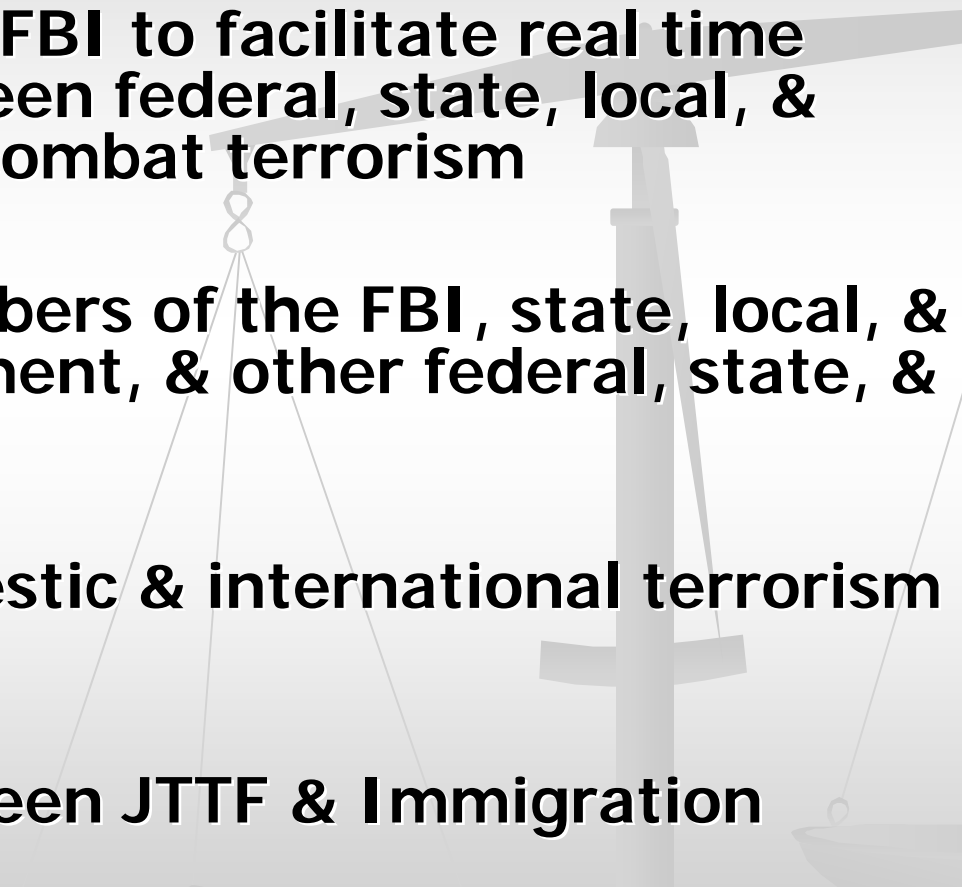
KEY ASSETS & CRITICAL INFRASTRUCTURE

- **Production Sector**
(energy, nuclear power plants, dams, chemical industry & Hazmat, defense industrial base)
 - **Service Industries**
(banking & finance, transportation & border security, postal & shipping)
 - **Sustenance & Health** (agriculture, food, water, public health)
 - **Federal & State**
(government, emergency services)
 - **IT & Cyber** (info. technology & telecommunications)
 - **Other** (commercial facilities, real estate, recreational, monuments & icons)
- 

ASSETS IN SDTX

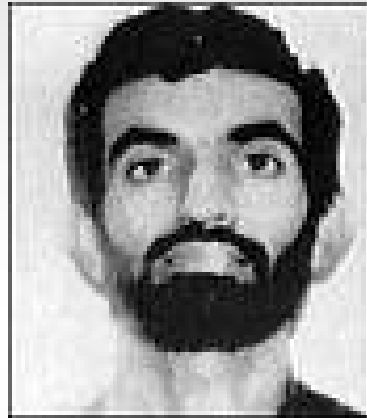
- Third largest U.S. city (Houston)
 - Most active Seaport (by tonnage) – six seaports in district
 - Largest land port in U.S. (Laredo)
 - 170 petroleum refining plants
 - 100 chemical plants that use, store & manufacture toxic chemicals
 - Petrochemical plants produce 52% of nation's gasoline, 35% of jet fuel
 - World's largest medical center
 - Nation's strategic oil reserve facilities
 - NASA/Johnson Space Center
 - South Texas Nuclear Project
 - 85 consular establishments
 - Military installations
 - Nation's second largest citrus producer
 - Nation's second largest Muslim population
- 

The Joint Terrorism Task Force (JTTF)

- Established by the FBI to facilitate real time coordination between federal, state, local, & tribal agencies to combat terrorism
 - Comprised of members of the FBI, state, local, & tribal law enforcement, & other federal, state, & local agencies
 - JTTFs handle domestic & international terrorism issues
 - Coordination between JTTF & Immigration Enforcement
- 

TERRORIST CONNECTIONS TO HOUSTON

- **Ramzi Yousef**



- **Lackawanna Six**



- **Jeffrey Leon Battle & The Portland 7**



- **Ahmed Omar Abu Ali**





NOEL EXINIA

- Informant: Exinia part of organization to smuggle 24 terrorists from Mexico to U.S. to blow up targets in Washington, D.C.
- Possession with intent to distribute a controlled substance, money laundering
- USA PATRIOT Act – delayed notice search warrant
- Convicted, sentenced to 50 years
- AUSA Charlie Lewis

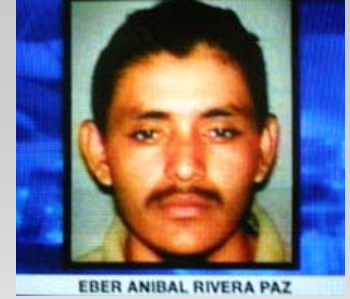
NIZAR LORIAN

- Syrian national, U.S. naturalized citizen
- Human smuggler, working with five others – attempted to bring 17 illegal aliens into U.S.; mostly from China
- Plan: Smuggle Chinese aliens into U.S. from Ecuador & Peru (low on Special Interest country radar), bring over Mexico border
- **Conspiracy to smuggle illegal aliens**
- Charges dismissed, due to Lorian's health
- AUSA Jeff Vaden

FARIDA GOOLAM AHMED

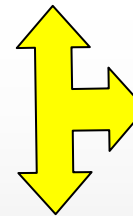
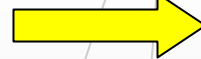
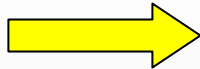
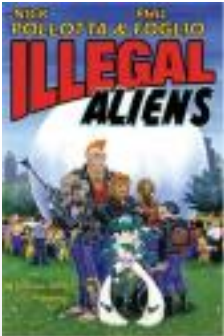
- Born in Pakistan, living in South Africa
- “Swam” across Rio Grande, went to McAllen Int’l Airport, travel to NYC
- Showed BP altered South African passport
- Smuggler of SIAs, base of operation in Johannesburg, believed to have catered to known terrorist groups from Middle East
- **Illegal entry, false statements, visa fraud**
- **USA PATRIOT Act – emergency wire taps**
- AUSA Glenn Cook

EBER ANIBAL “LESTER” RIVERA-PAZ



- Smuggled into U.S.- Caught in trunk of car chased down by Border Patrol
- Numerous MS-13 tattoos over body; numerous aliases
- Wanted in Honduras in connection with December 2004 murder of 28 people (including six children) on bus
- **Illegal re-entry**
- Sentenced to one year in prison, deported
- AUSA Glenn Cook

OPERATION LABOR LEASE & THE TOLLIN GROUP



OPERATION TARMAC

BLUE BADGE
High level access

Tarmac
Terminals
Plane interior
Maintenance

2500 employees



WHITE BADGE
Low level access

Concession,
janitorial
services

600+ – possible violations
143 prosecutions
Blue = 57 White = 96

OPERATION ACCESS DENIED

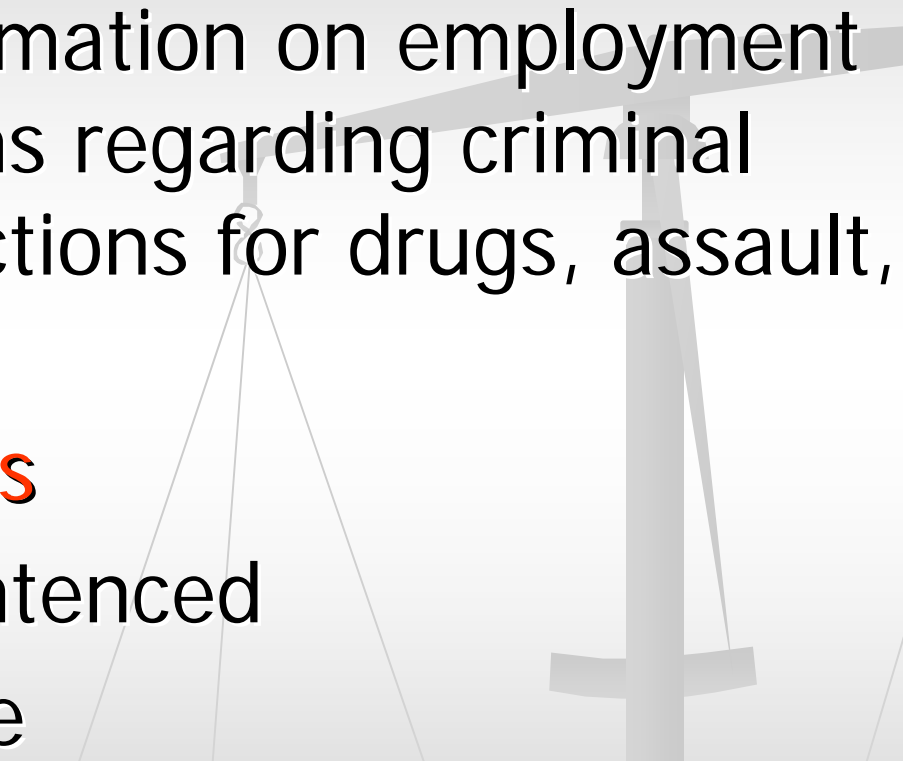


OPERATION INSECURITY GUARD

Employment of private security contractors by federal government to protect critical infrastructure



TSA CHECKPOINT GUARDS

- Gave false information on employment application forms regarding criminal histories (convictions for drugs, assault, DWI)
 - **False statements**
 - Convicted & sentenced
 - AUSA Gary Cobe
- 

BORDER APPREHENSIONS

- **North America** – Canada, Mexico
 - **Central America & Caribbean** – Costa Rica, Dominican Republic, El Salvador, Guatemala, Haiti, Honduras (mostly MS-13), Nicaragua
 - **South America** – **Argentina**, Bolivia, **Brazil**, Chile, Colombia
 - **Europe** – **Albania**, **Kosovo**, **Moldova**, **Poland**, **Romania**, **Serbia**, **Turkey**
 - **Africa** – **Algeria**, **Egypt**, **Eritrea**, **Ethiopia**, **Ghana**, **Liberia**, **Mauritania**, **Nigeria**, **Somalia**, **Sudan**, **Tanzania**
 - **Middle East** – **Iran**, **Iraq**, **Jordan**, **Lebanon**
 - **Asia** – **Afghanistan**, **China**, **India**, **Pakistan**, **Kazakhstan**, **Thailand**, **Philippines**, **South Korea** (ind. born in **North Korea**)
- 