

# Responding to Disorderly Day Labor Sites

Rob T. Guerette

*Florida International University, Miami*

Paper presented at the Immigration, Crime & Public Policy Symposium, Center for Violence Prevention and Community Safety, Arizona State University, April 5, 2007

# Introduction

- Illegal immigration center of extensive debate
  - Immigration is a federal issue that local level government is forced to deal with
  - Often most visible consequence is presence of day labor sites
  - Police are at forefront when practice of day laboring becomes problematic
-



Sources: [olimu.com](http://olimu.com); [nytimes.com](http://nytimes.com)



Sources: [indybay.org](http://indybay.org); [daylabor.org](http://daylabor.org)

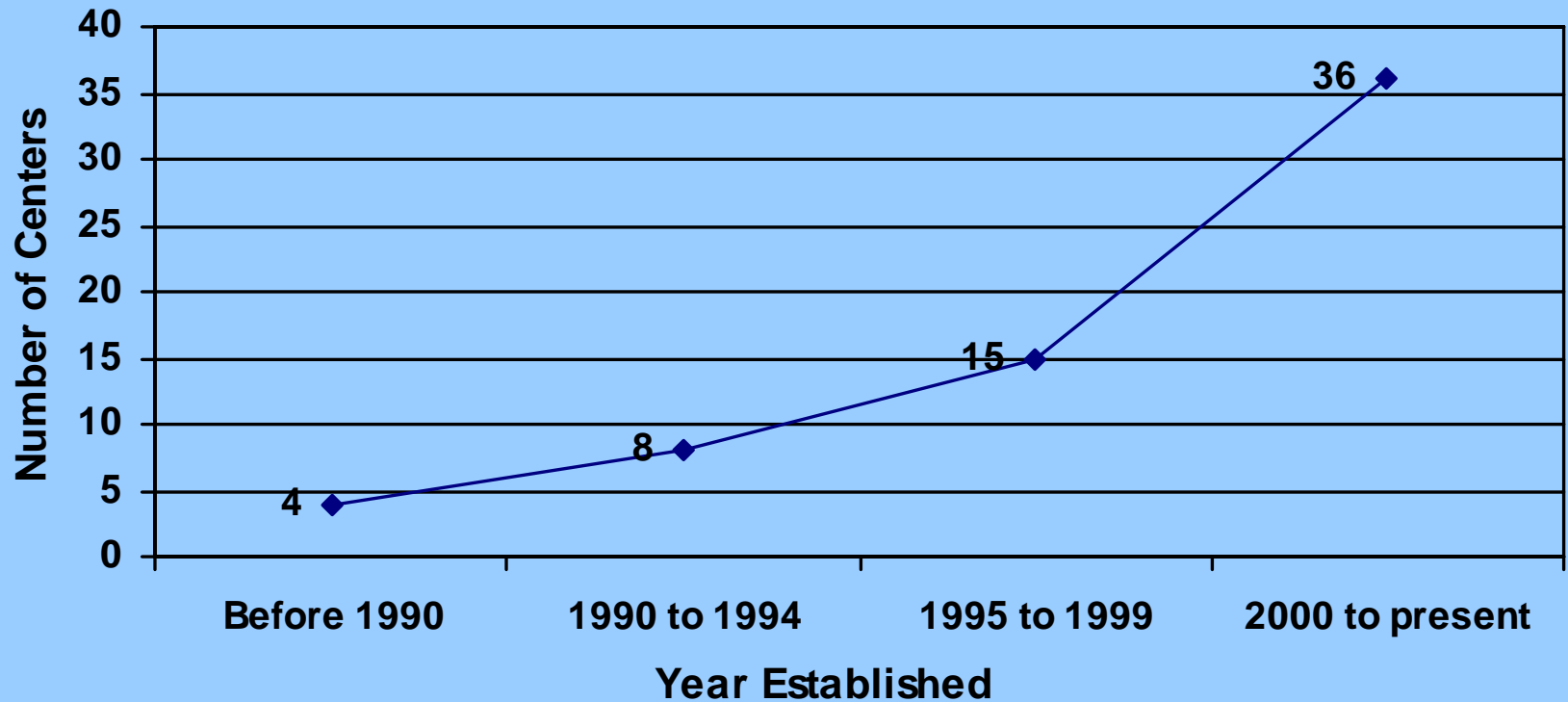
# Presentation Overview

- The Problem of Disorderly Day Labor Sites
    - About day laboring
    - Nature of problems
  - The Problem-Oriented Policing (POP) Approach
    - The SARA Model
    - Understanding your local problem
    - Formulating a response
    - Measuring your effectiveness
  - Conclusion
-

# About Day Laboring

- Long history
  - Practiced in medieval times
  - In early United States by Irish, Chinese, Italians
  
- Today\*
  - Laborers mostly
    - Young (66% < 37 y.o.a.)
    - Hispanic from Central & South American (91%)
    - Male (98%)
    - Poorly educated (62% < eight years of school)
    - Illegal/undocumented immigrant (75%)
  - Employers mostly
    - Homeowners/renters (49%)
    - Contractors (43%)
  - Locations mostly
    - Informal (79%)
    - In front of businesses (24%) & home improvement stores (22%)

**Figure 1: Formation of Day Labor Centers**



# Nature of Problems

- Public disorder
  - Crime
  - Economic concerns
  - Spillover effects
  - Smuggling links
-



# Limitations of Traditional Response

- Repetitive calls for service becomes taxing on police resources
- Effects of enforcement crackdowns short lived



# The Problem-Oriented Policing (POP) Approach



# Understanding Your Local Problem

- Asking the right questions about...
  - Day laborers
  - Employers
  - Merchants and community members
  - Locations and times
  - Current responses
  - Stakeholders



# Focus of Day Laborer Related Goldstein Award Submissions

---

<b>Agency</b>	<b>Nature of Problem</b>
Glendale PD, CA (1997) (W)	Disorder at Street Corner near Home Depot
Stamford PD, CT (2000)	Street Robbery of Day Laborers
Kansas City PD, MO (2004)	Crime and Disorder at Street Corner
Herndon PD, VA (2006)	Disorder at Convenience Store
Plano PD, TX (2006)	Disorder at City Sponsored Day Labor Site

---

(W) = Winner

# Formulating a Response

- Analysis should inform response
  - Multi-faceted/packaged approach
  - Form partnerships
  - Successful responses include those that:
    - Eliminate, reduce (including harm incurred), repair, or move the problem
-

# Specific Responses

## *Managing Day Laboring*

- Organizing at current day labor site
  - Imposing temporal restrictions on day labor activities
  - Establishing a new day labor center
  - Utilizing volunteers to manage day labor centers
  - Soliciting assistance from area merchants
  - Obtaining grants and other financial support
  - Creating and enforcing rules and procedures at day labor sites/centers
  - Forming an advisory committee
  - Establishing supplemental programs at day labor center
  - Closing streets and alleys, diverting traffic or regulating parking
-

# Specific Responses, cont.d...

## *Enforcing Laws*

- Enforcing laws prohibiting disorder (e.g. trespassing, loitering, public intoxication, littering, and vandalism)
  - Enforcing laws prohibiting assault and robbery
  - Establishing a highly visible police presence
  - Creating and enforcing ordinances prohibiting the solicitation of work in non-designated places
  - Enhancing fines/penalties for soliciting work or hiring workers in non-specified zones
  - Public awareness campaigns
-

# Specific Responses, cont.d...

## *Responses with Limited Effectiveness*

- Conducting sweeps and enforcing immigration laws
  - Prohibiting day laboring
-



# POP Submission Responses

Response	Agency				
	Glendale	Stamford	Kansas City	Herndon	Plano
<i>Managing Day Laboring</i>					
Partnerships	X	X	X	X	
Establish/Facilitate Center	X		X	X	X
Education/outreach	X		X		
Improved Services	X	X	X		X
<i>Enforcing Laws</i>					
Est./Enforce Codes	X		X	X	X
Enforce Disorder/Crime	X		X		X

# Measuring Your Effectiveness

- Potentially useful outcome measures might include:
    - Fewer citizen complaints
    - Reduced reports of violence
    - Reduced reports of robberies
    - Less traffic congestion
    - Less evidence of litter and trash
    - Fewer injuries among laborers
    - Fewer observations of drug and alcohol use
    - Improved perceptions of order by area residents and merchants
-

# POP Submission Outcomes

---

## Agency

## Outcomes

---

Glendale PD, CA (1997) (W)

- Reduced citizen/business complaints
- Elimination of loitering laborers on streets
- 80% increase in # of laborers working

Stamford PD, CT (2000)

- Robberies decreased substantially
- Elimination of laborers as robbery victims

Kansas City PD, MO (2004)

- Increased police/Hispanic relations
- “Self-policing” by laborers/community
- Disorder eliminated

Herndon PD, VA (2006)

- Decreased calls for service
- Substantial elimination of loitering

Plano PD, TX (2006)

- Motor vehicle burglaries decreased 59%
  - Calls for service decreased 16%
-

# Center for Problem-Oriented Policing



Home About POP Center Problems Responses Analysis Tools Library Learning Center

## Learning Center



**What's POP?**

- [NEW! Model POP Curriculum](#)
- [Interview with Herman Goldstein](#)
- [Street Prostitution: Interactive Module](#)
- [Problem Analysis Module](#)  
Step-by-step help in solving problems
- [25 Techniques](#)  
of Situational Crime Prevention
- [Crime Analysis For Problem Solvers](#)

## POP Guides

### Problem-Specific Guides

New Guides:

- [Domestic Violence](#)
- [Disorder at Day Labor Sites](#)
- [Street Prostitution 2nd. Ed.](#)

Browse Guides By:

[Author](#), [Year](#), [Category](#), [Guide Number](#) or [Alphabetical](#)

Complete Guide Listing:

Select a guide...

Find A Guide by key word:

### Response Guides

- [Crime Prevention Publicity Campaigns](#)
- [Police Crackdowns](#)
- [Closing Streets and Alleys](#)
- [Shifting and Sharing Responsibility for Public Safety Problems](#)
- [Video Surveillance of Public Places](#)

### Problem-Solving Tool Guides

## Search

[Search Entire Site](#)

[Search Tips and Options](#)

**Goldstein Awards 2007**

**POP Conference 2007**  
[Click for 2006 presentations](#)

### New and Notable

POP Center Guides:

**GOT AN ILLEGAL IMMIGRATION PROBLEM?**

New Guide on Disorder at Day Labor Sites may help

Future Guides | Conferences  
Books, Articles, Reports

## Library

- [POP Projects and Awards](#)
- [Recommended Readings](#)
- [Glossary](#)
- [Links](#)
- [More...](#)

# Conclusion

- Utility of POP approach
    - Not confined to conventional problems
    - Evidence based
    - Recognizes heterogeneity across communities
  - Identify and move toward community goals
-

U.S. Department of Justice  
Office of Community Oriented Policing Services



**COPS**  
COMMUNITY ORIENTED POLICING SERVICES  
U.S. DEPARTMENT OF JUSTICE

Problem-Oriented Guides for Police  
Problem-Specific Guides Series

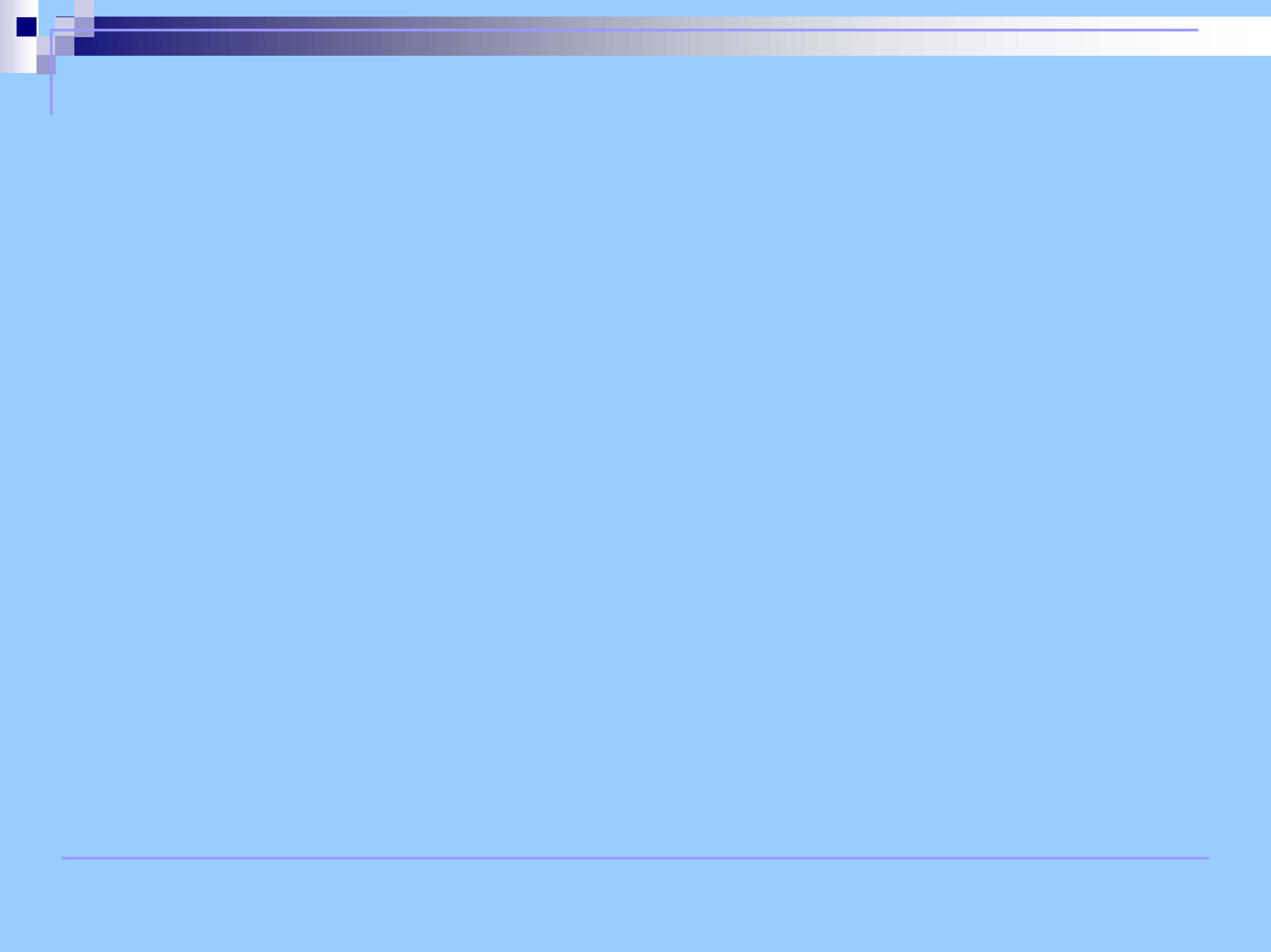
No. 44

# Disorder at Day Laborer Sites

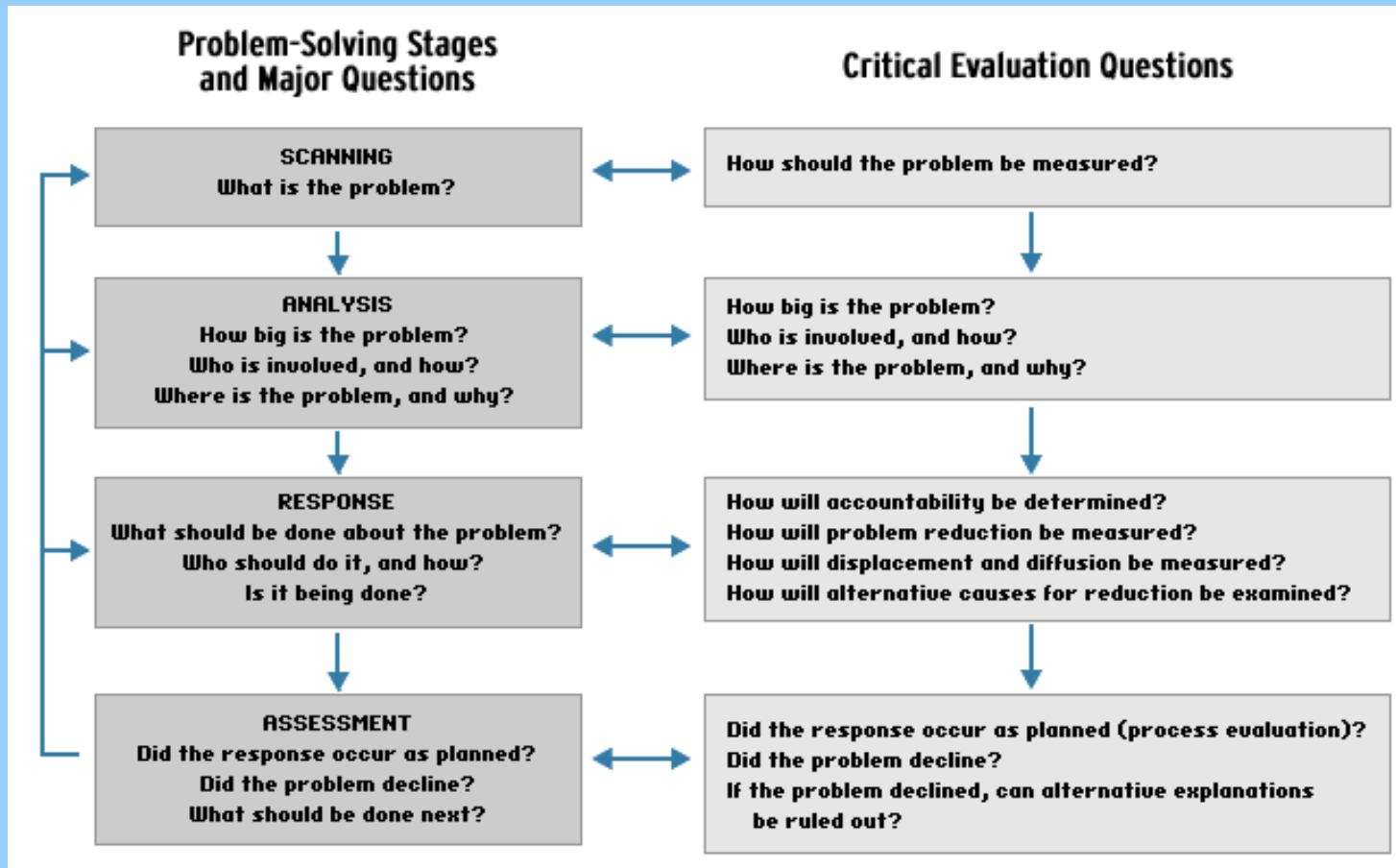
by  
Rob T. Guerette



[www.cops.usdoj.gov](http://www.cops.usdoj.gov)



# The Problem-Oriented Policing (POP) Approach





# POP Submission Responses

Agency	Responses
Glendale PD, CA (1997) (W)	<ul style="list-style-type: none"><li>-Labor center established w/ little public funds</li><li>-No solicitation ordinance enacted &amp; enforced</li><li>-Education campaign</li></ul>
Stamford PD, CT (2000)	<ul style="list-style-type: none"><li>-Partnerships w/ govt. to improve housing</li><li>-Facilitated increased use of banks by laborers</li></ul>
Kansas City PD, MO (2004)	<ul style="list-style-type: none"><li>-Business, resident, gov.t partnerships</li><li>-Enforcement/deportation of chronic offenders</li><li>-Building of labor center/community outreach</li></ul>
Herndon PD, VA (2006)	<ul style="list-style-type: none"><li>-Labor center established/Partnerships formed</li><li>-No solicitation ordinance enacted &amp; enforced</li></ul>
Plano PD, TX (2006)	<ul style="list-style-type: none"><li>-City Ordinance and disorder law enforcement</li><li>-Compliance meetings w/ staff &amp; city officials</li><li>-Center remodeling/NPO officer at site</li></ul>

(W) = Winner